

The Holden Beach Environmental Impact Statement

Geoff Gisler
April 29, 2016



National Environmental Policy Act

- Why?
 - Public disclosure
 - Inform decision makers
 - To comply with other laws
- How?
 - Assess environmental baseline
 - Compare effect of various alternatives
 - Environmental effects
 - Economic effects

Draft Environmental Impact Statement

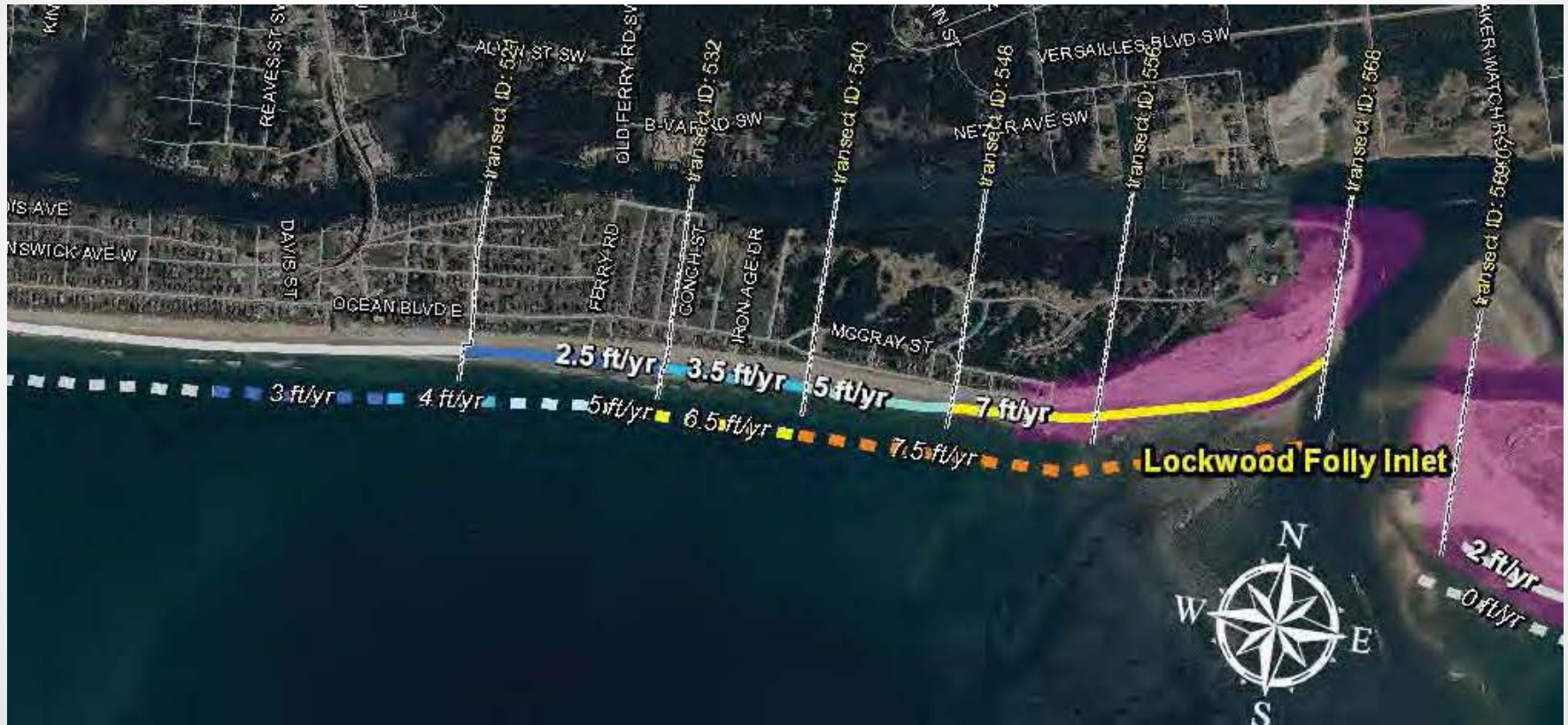
- Modeled change in shoreline over 4 years
- Evaluated 6 alternatives:
 - Alternative 1: No Action/Status Quo
 - Alternative 2: Relocation/Retreat
 - Alternative 3: Beach Nourishment
 - Alternative 4: Nourishment and Inlet Management
 - Alternative 5: Short Groin with Nourishment
 - Alternative 6: Intermediate Groin with Nourishment

The Issue: Chronic Erosion

“The purpose of the Holden Beach East End Shore Protection Project (Proposed Action) is to reduce or mitigate ongoing and chronic erosion at the East End of Holden Beach and to protect and secure public infrastructure, roads, homes, businesses, rental properties, beaches, recreational assets, and protective dunes.”



The Issue: East End Erosion



The Issue: East End Erosion



Narrowing The Issue



None of the alternatives protect every house.

Narrowing The Issue



The Issue: By the Numbers

- Parcels affected:
 - Alt. 2: 28 total, 19 improved
 - Alt. 6: 16 total, 11 improved
- Assessed value:
 - Alt. 2: \$5.18M
 - Alt. 6: \$2.1M
- Cost:
 - Alt. 2: \$0
 - Alt. 6: \$34.43M

Will A Groin Reduce Beach Nourishment Needs?

- DEIS only evaluated East End: east of station 40+00.
- Since 2001: less than 40,000 cy/yr on average (including post-Hanna nourishment)
- Alternative 6 (terminal groin): 150,000 cy every four years (~37,500 cy/year).

Will A Groin Protect the Beach?



Conclusions

- The EIS relies on a model that overestimates erosion and is limited to only four years.
- If we assume the EIS modeling is correct, building a terminal groin will only provide limited protection to five or six houses—no alternative will protect every house.
- The proposed terminal groin will not significantly reduce beach nourishment requirements or maintain a recreational beach in front of East End houses.

